



Installation Instructions for Engine/Transmission Skid Plate for 1993-1998 Jeep® ZJ Grand Cherokee

Thank you for purchasing your new Skid Row Offroad engine/transmission skid plate. It is designed to give you peace of mind while traversing even the toughest trails.

Your skid plate package should come complete with the following parts:

1. (1) Engine Skid Plate
2. (1) Curved Mounting Bracket
3. (1) Angled Mounting Bracket
4. (2) 3/8-16 UNC x 1" Carriage Head Bolts
5. (2) 3/8-16 UNC x 1.5" Carriage Head Bolts
6. (2) 3/8-16 UNC x 3" Carriage Head Bolt
7. (6) 3/8-16 UNC Hex Nut
8. (6) 3/8" Lock Washers
9. (2) 3/8" Flat Washers
10. (1) 3/8-16x 1" Self tapping Bolt



Step 1: Verify the position of both lower control arm bolts. If the threaded portion of the bolt is facing the inside of the chassis as shown in the photo to the left, simply remove the nuts and go to Step 2. Otherwise, to install the skid plate you will need to perform the first step with the vehicle on level ground. **Do not jack up the vehicle at this point!** It is important that the vehicle is on level ground so that there is no load on the lower control arms. The lower control arm bolts need to be removed and then re-installed with the bolt heads to the outside of the chassis.

The nuts should be left off. These will be re-installed later.

Once this is done, the vehicle may be jacked up to provide more room to work. **Be sure to place jack stands under the vehicle before working underneath it!**

Step 2: Place the skid plate over the passenger side, lower control arm bolt. Push the rear of the plate up against the transmission cross-member to determine how close the skid plate comes to the exhaust system. Use the top-most hole in the skid plate if there isn't enough clearance (1/4" or more).

Step 3: Install the nut on the control arm bolt and tighten. With the lower control arm bolt tightened, the rear edge of the skid plate should be roughly centered on the transmission cross-member and parallel to the rear edge of the cross-member. It should clear the transfer case skid plate.

Step 4: With the rear edge of the skid plate firmly pressed against the cross member use the two holes as a guide to drill the holes needed to attach the skid plate. For the driver's side you will need to drill through the cross member with a 3/8" drill and install the 3" long carriage bolt, flat washer, lock washer, and nut.

Step 5: You have two options for the passenger side hole.

Option A: If there isn't clearance above the cross-member due to the exhaust system you should use the self-tapping 3/8" bolt. To do this drill a 5/16" hole at the passenger side, rear of the skid plate and install the 3/8"-16 x 1.0" self-tapping bolt.

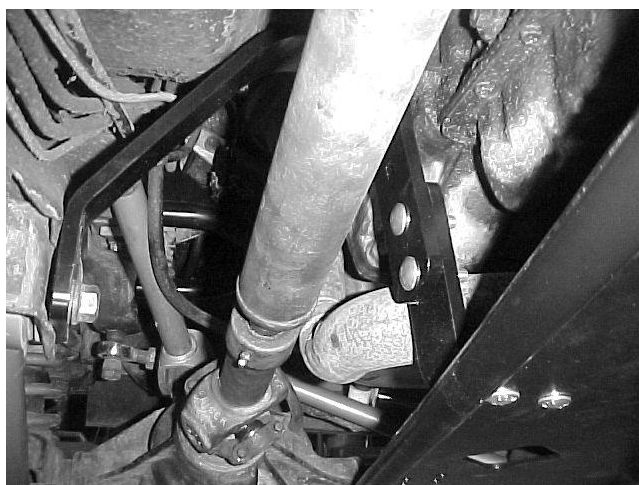
Option B: If there is enough clearance for the washers and nut, then simply drill through the cross-member with a 3/8" drill and install the 3" long carriage bolt, flat washer, lock washer, and nut.

Step 6: Take the Curved Mounting Bracket and place it over the driveshaft and the driver's side lower control arm bolt. Re-install the nut on the lower control arm using Loctite thread locking compound or equivalent. (not included)

Step 7: Install the Angled Mounting Bracket as shown to the right. Use the 1" long carriage bolts to attach it to the skid plate and use the 1.5" long carriage bolts to attach it to the Curved Mounting Bracket.

Step 8: Tighten all hardware once everything is fit together. Be sure to tighten the lower control arm nut to the factory recommended torque.

We hope you enjoy your new Skid Row Offroad engine/transmission skid plate!



Sincerely,

The Staff at SFK Manufacturing, LLC

SFK Manufacturing, LLC
PO Box 306, Shermans Dale, PA 17090
Phone 717-701-8315
Fax 717-701-8316

www.SkidRowOffroad.com