



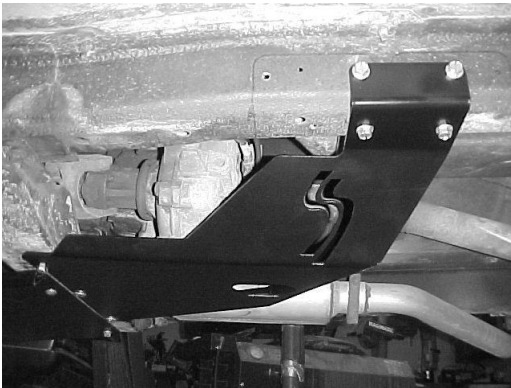
Installation Instructions
for
Transfer Case Skid Plate for
1984-2001 Jeep® XJ Cherokee and
1993-1998 ZJ Grand Cherokee

Note: Does not fit NP249 Transfer Case.

Thank you for purchasing your new transfer case skid plate. It is designed to give you peace of mind while traversing even the toughest trails.

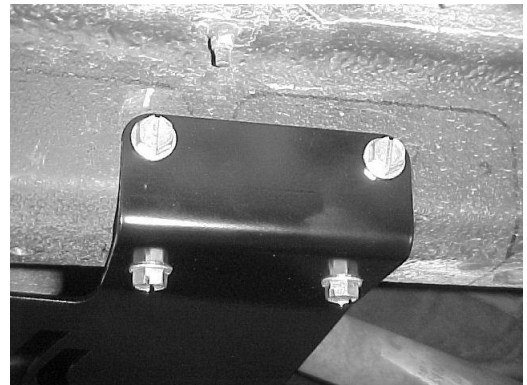
Your skid plate package should come complete with the following parts:

1. (1) Transfer Case Skid Plate
2. (3) 3/8-16 UNC x 3" Carriage Head Bolt
3. (3) 3/8-16 UNC Hex Nuts
4. (3) 3/8" Lock Washers
5. (3) 3/8" Flat Washers
6. (4) 3/8-16x 1" Self tapping Bolt



Step 1: Place the skid plate up against the frame rail and the transmission cross-member in the position shown. The three square holes in the skid plate should line up with holes in the cross-member for most XJ's. The leading edge of the skid plate should be approximately in the middle of the transmission cross-member on ZJ's.

Step 2: With the skid plate located, use a jack to hold the skid plate up against the frame rail and then drill the four (4) 5/16" holes into the frame rail. Then install the four (4) 3/8-16 self-tapping bolts. **Make sure the skid plate is tight up against the frame rail before drilling! Don't worry if the front edge of the skid plate is lower than the cross-member. The skid plate was designed to accommodate a 1" cross-member drop.**



Step 3: The 3” long carriage bolts go through the square holes at the leading edge of the skid plate. Most XJ’s will have holes in the transmission cross-member that go through both sides of the cross-member. However, some XJ’s will not and ZJ’s definitely won’t. If your Jeep does not have these holes or if the holes are too small, drill 3/8” holes through the cross-member to attach the skid plate. Push the carriage bolts through the transmission cross-member and install a lock washer and nut on each. **If the transmission cross-member has not been lowered, it may be helpful to use a jack to push the skid plate up against the cross-member for drilling and bolt installation.**



Step 4: Tighten all hardware and you’re done!

We hope you enjoy your new Skid Row Offroad transfer case skid plate!
Sincerely,

The Staff at SFK Manufacturing, LLC

SFK Manufacturing, LLC
PO Box 306, Shermans Dale, PA 17090
Phone 717-701-8315
Fax 717-701-8316

www.SkidRowOffroad.com